



Start of PreTrip

- Assure that there is at least one wheel chock is in place
- and that you have the keys to the vehicle with you.



Marker, ID, Head Lights, Reflectors & Turn Signals

PMS, NCBB, NMH, Amber in color (Head Lights clear in color)
and clean





Approach

- Check for any fluid leaks under the engine
- area at the front of the tractor and for any
- leaning left or right.





Unlatch and Raise the Hood

- Unlatch and raise the hood, shouting out “Clear”
- to warn others so that no one is injured by the hood.



Unique (Passenger) Side Engine Compartment

- Move to the unique (passenger) side of the engine compartment.
- Check that all hoses and clamps are PMS, NCBB, NMH, no ABCDF,
- not leaking and clamps secure.



Coolant Reservoir

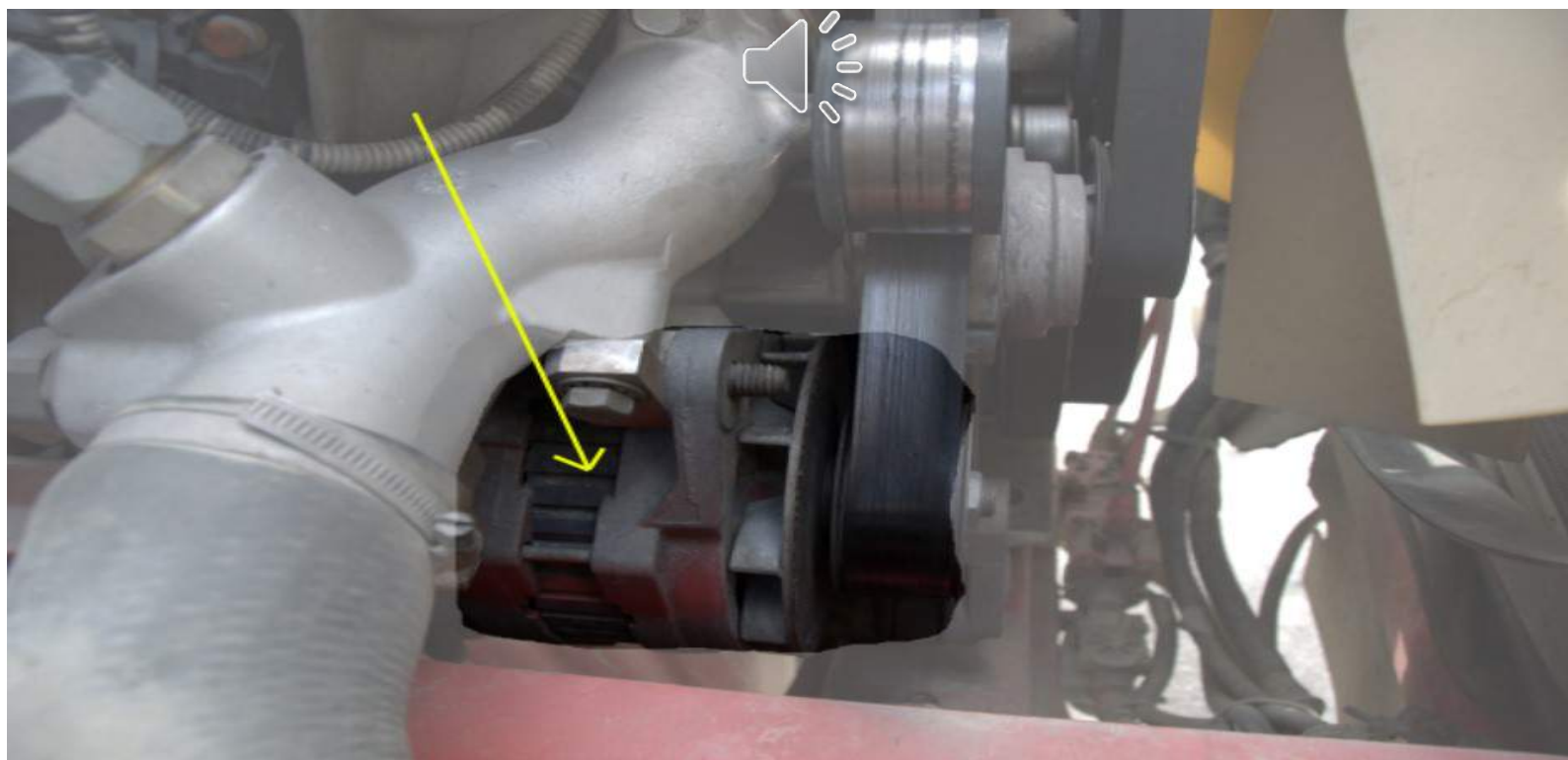
- Coolant Reservoir PMS, NCBB, NMH, not leaking.
- Filled to the proper level. Attached hoses have no ABCDF and not leaking.





Belt Driven Alternator

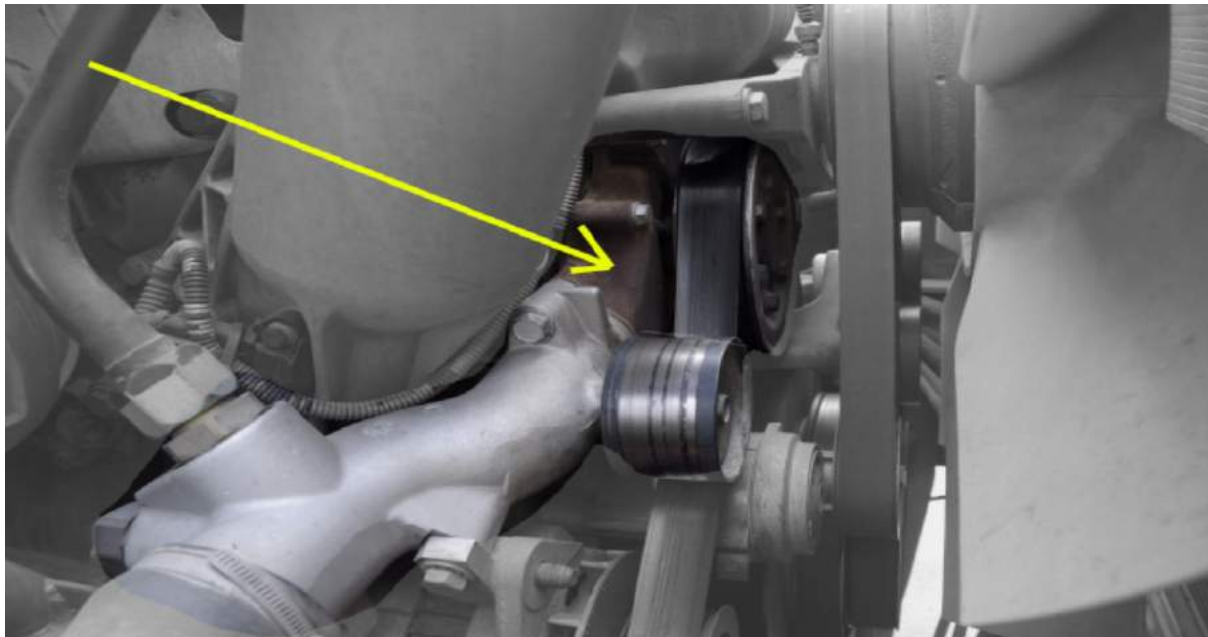
- PMS, NCBB, NMH, Check wires for splices And freys.
- Belts, no ABCDF and no more than $\frac{3}{4}$ inch free play.





Belt Driven Water Pump

- Water Pump PMS, NCBB, NMH, not leaking, Belt driven. Belt
- has no ABCDF and no more than $\frac{3}{4}$ inch free play. Hoses
- have no ABCDF and no leaks.





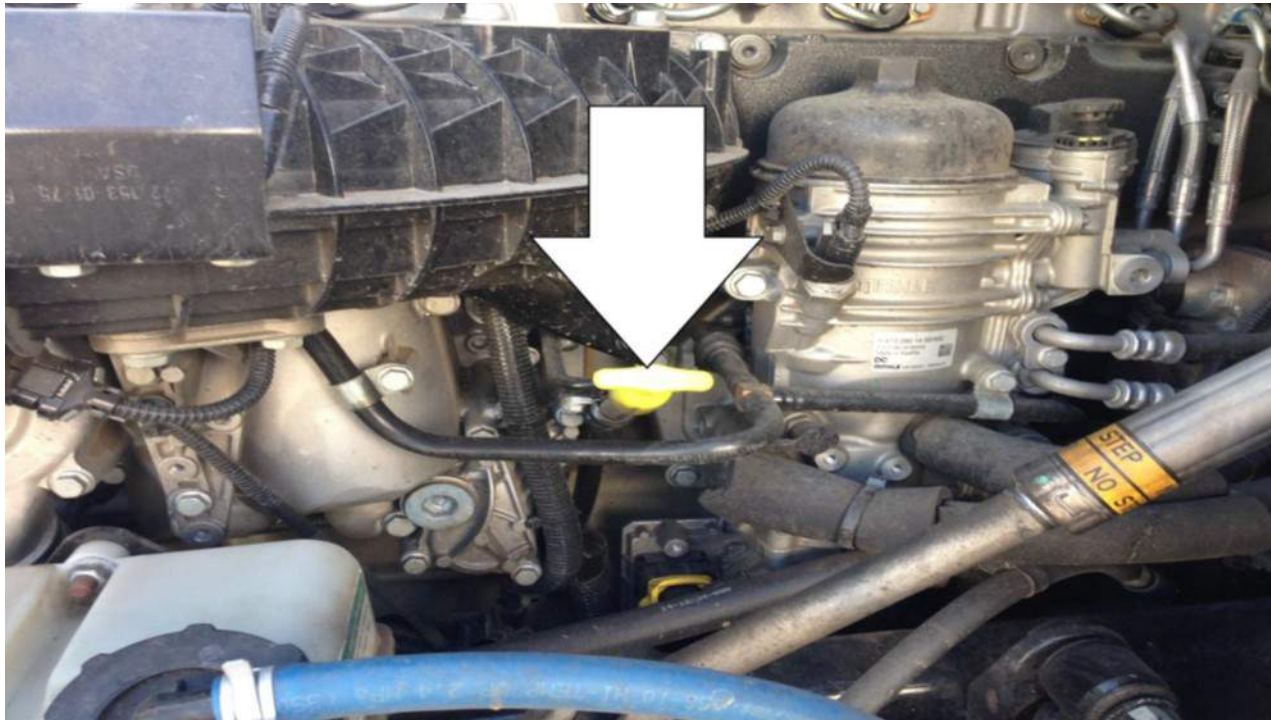
Driver's Side Engine Compartment

- Move to the driver's side of the engine compartment.



Oil Dipstick

- Oil Dipstick PMS, NCBB, NMH. Remove dipstick, wipe clean with
- a paper towel or rag, reinsert, remove and check level. If low, add
- at the oil fill spout.





Power Steering Reservoir

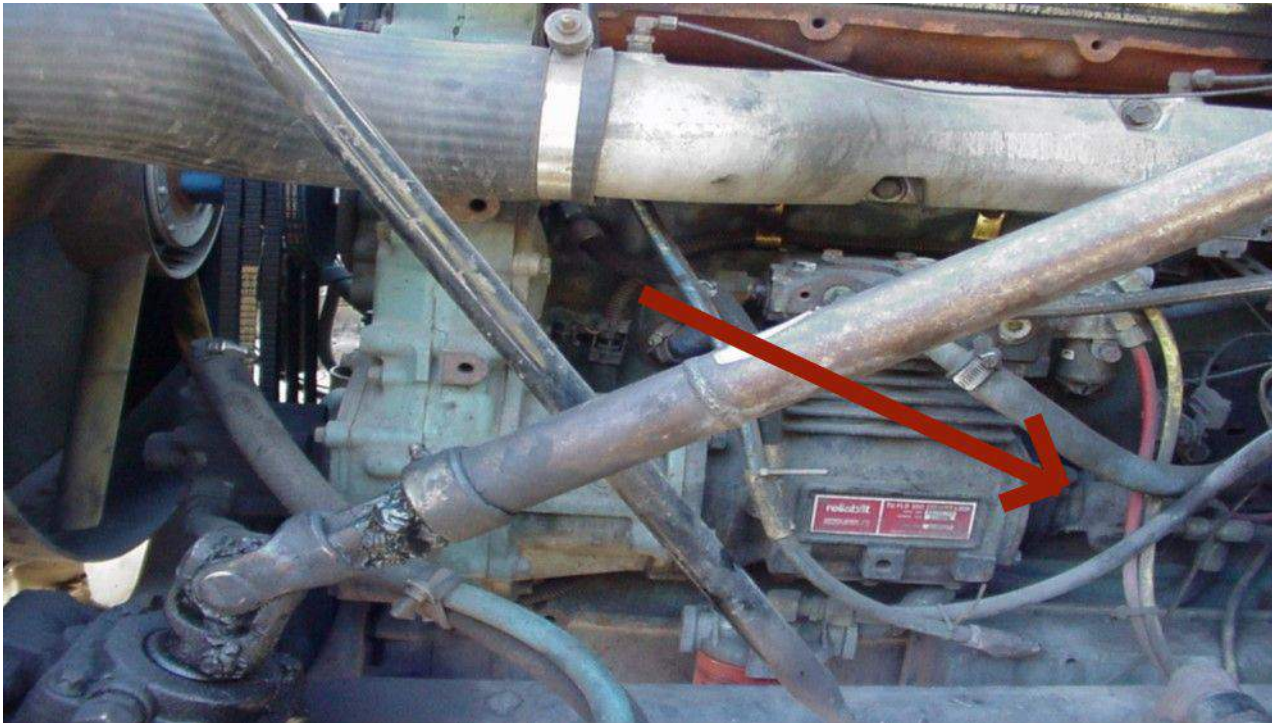
- Power Steering Reservoir PMS, NCBB, NMH, not leaking. Filled to the
- proper level. Attached hoses have no ABCDF and not leaking.





Gear Driven Power Steering Pump

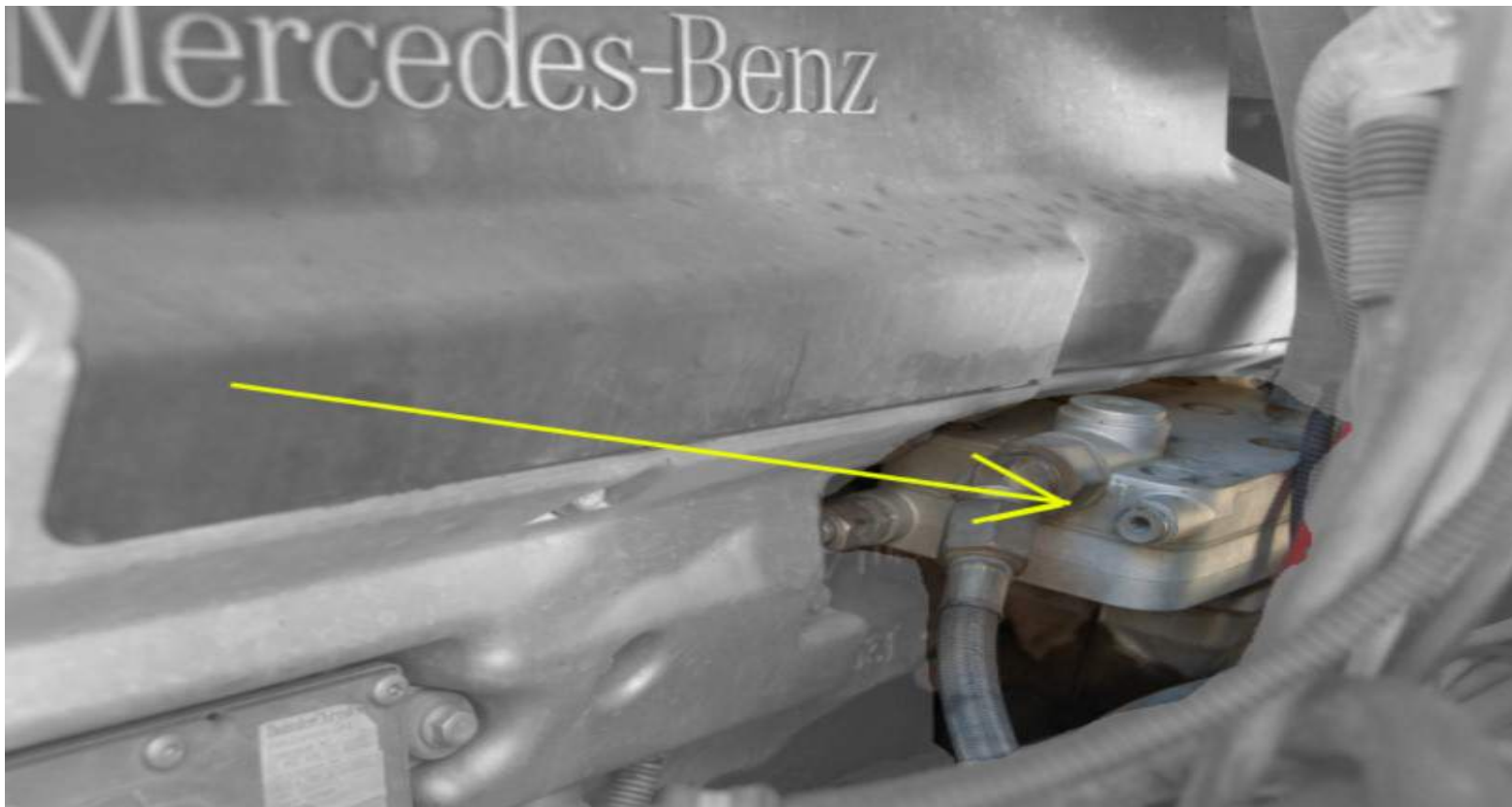
- Power Steering Pump PMS, NCBB, NMH, not leaking.





Gear Driven Air Compressor

- Air Compressor PMS, NCBB, NMH, not leaking. Gear driven.





Steering Box and Hoses

- Steering Box PMS, NCBB, NMH and not leaking.
- Hoses, no ABCDF and not leaking.





Front Suspension Springs & Shocks

Springs PMS, NCBB, NMH and not shifted out of alignment. Shocks PMS, NCBB NMH and not leaking.





U-bolts

- Make sure U-bolts are PMS, NCBB, NMH with no rub marks,
- or shiny threads.





Spring Mounts

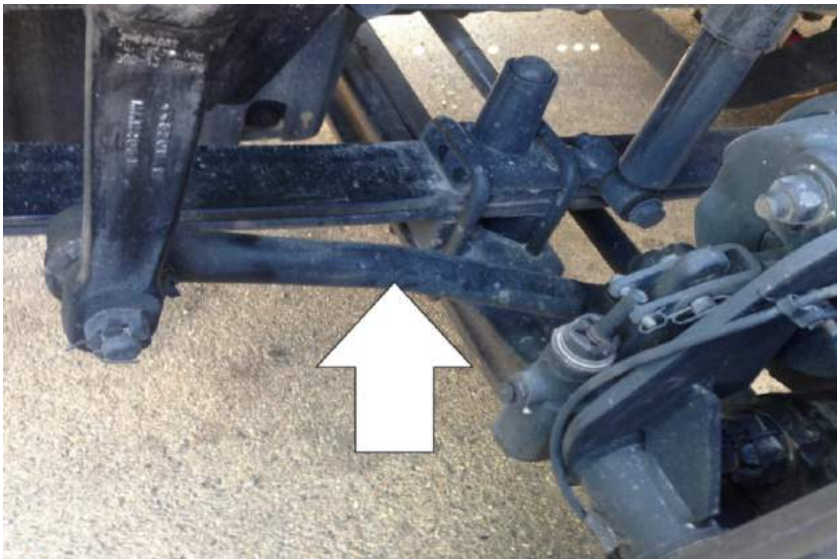
Check that Spring Mounts are PMS, NCBB, NMH





Pitman Arm & Drag Link Upper & Lower Control Arms Tie Rod

- PMS, NCBB, NMH, secured with a castle nut and cotter pin in locked
- Position.





Brake Hoses

- Brake hoses are PMS, NCBB, NMH no ABCDF
- and not leaking.





Brake Chamber

Brake Chambers are PMS, NCBB, NMH
and not leaking.





Slack Adjuster & Push Rod

- Slack adjusters and push rods are PMS, NCBB, NMH and
- no more than 1 inch free play at push rod with brakes released.





Drums & Linings

- Drums and linings are PMS, NCBB, NMH, no oil, grease
- or debris.





Steer Tires

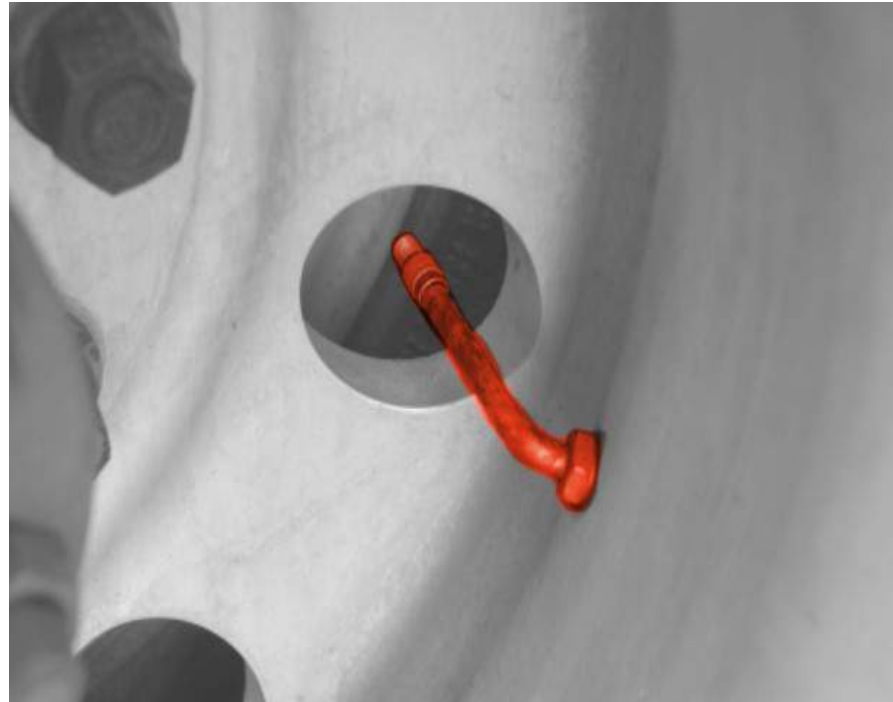
- PMS, NCBB, NMH, ABCDF, Not leaking. Properly seated to the rim
- with no rust to indicate leaks. Tread is evenly worn and has at least
- 4/32 inch tread depth.





Valve Stems with Metal Caps

- PMS, NCBB, NMH, Not leaking. Use an air gauge to ensure the
- tire pressure is at proper PSI (found on sidewall of tire)





Rims

- PMS, NCBB, NMH, no illegal holes or welds.





Lug Nuts

- PMS, NCBB, NMH. No rust trails or shiny threads
- which indicate loose, or cross threaded nuts.





Hub Oil Seal

- Check that the Hub Oil Seal is PMS, NCBB, NMH, not leaking. Check oil level at sight glass and
- check outer rubber seal for ABCDF and leaks.





Driver, Fuel Area & Underside

- Move to the driver/fuel area.



Side Light (marker, signal, flasher)

PMS, NCBB, NMH. Amber in color and clean.





Door & Mirror

- Door and door handle. PMS, NCBB, NMH Opens and closes properly
- Mirror and mirror mount PMS, NCBB, NMH. Clean with no illegal stickers or anything to obstruct my view.





Fuel Tank & Cap

- PMS, NCBB, NMH and not leaking.





Steps & Catwalk

- Steps & Catwalk PMS, NCBB, NMH with no oil, grease or debris.





Reflectors on Rear of Cab

- Reflectors PMS, NCBB, NMH clear in color and clean.





Drive Shaft

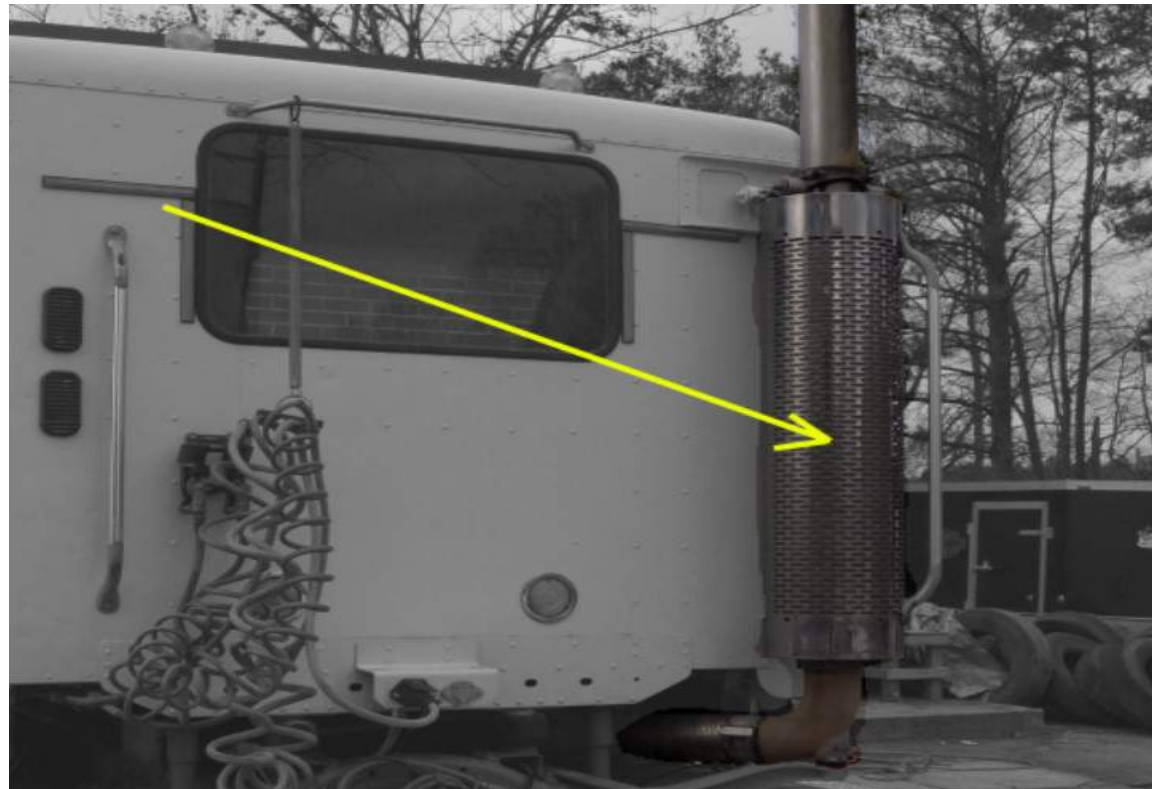
- Drive shaft PMS, NCBB, NMH and not twisted. U-Joints
- not loose with no debris in the joints.





Exhaust System

- Exhaust System PMS, NCBB, NMH
- No soot which indicates exhaust leaks.





Frame and Cross Members

- Frame and Cross Members PMS, NCBB, NMH with
- no illegal holes or welds.





Drive Axles

- Move to the tractor drive axles.



Drive Suspension Springs, Air Bags & Shocks

- Springs PMS, NCBB, NMH or shifted out of alignment. Air Bags
- and mounts PMS, NCBB, NMH ABCD and not leaking. Shocks
- PMS, NCBB NMH and not leaking.





U-bolts

Make sure U-bolts are PMS, NCBB, NMH with no rub marks, or shiny threads.





Spring Mounts

- Check that Spring Mounts are PMS, NCBB, NMH





Brake Hoses

- Brake hoses are PMS, NCBB, NMH no ABCDF
- and not leaking.





Brake Chamber

Brake Chambers are PMS, NCBB, NMH
and not leaking.





Slack Adjuster & Push Rod

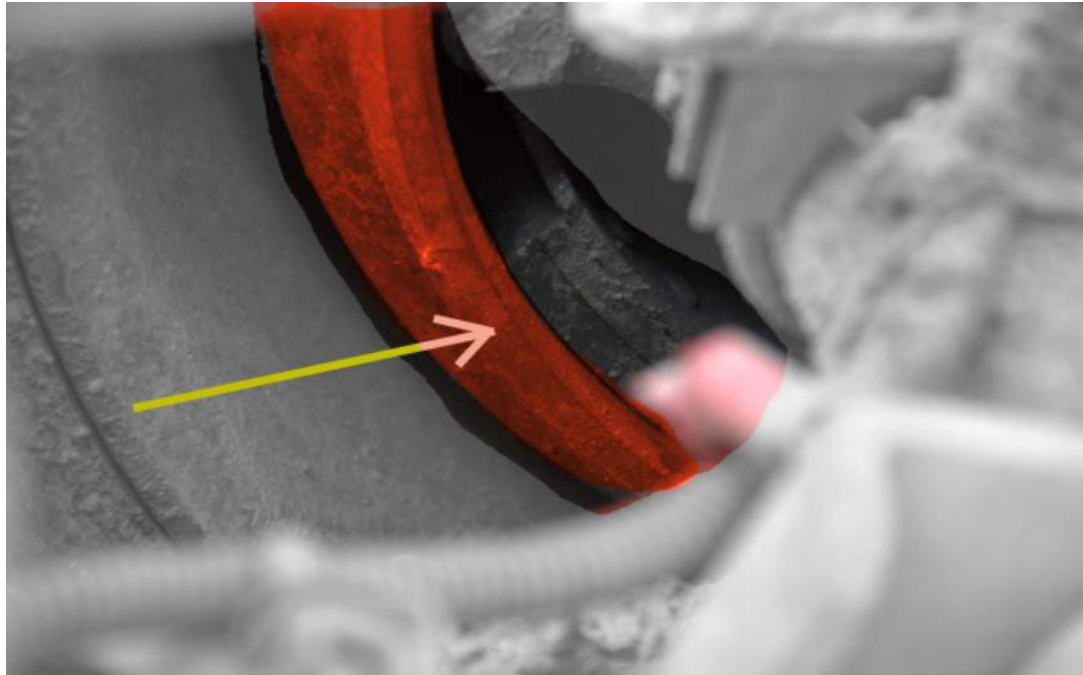
Slack adjusters and push rods are PMS, NCBB, NMH and no more than 1 inch free play at push rod with brakes released.





Drums & Linings

Drums and linings are PMS, NCBB, NMH, no oil, grease or debris.





Drive Tires

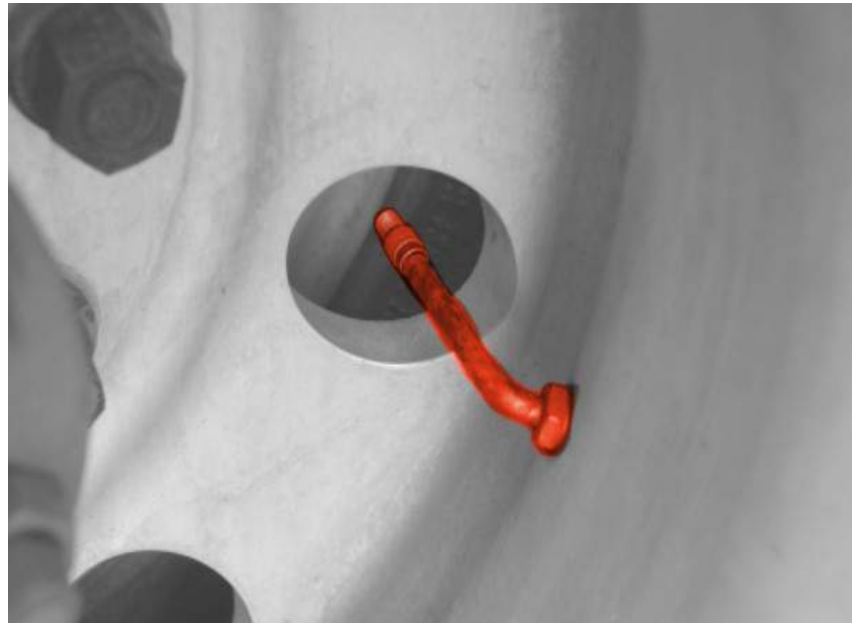
PMS, NCBB, NMH, ABCDF, Not leaking. Properly seated to the rim with no rust to indicate leaks. Tread is evenly worn and has at least 2/32 inch tread depth.





Valve Stems with Metal Caps

- PMS, NCBB, NMH, Not leaking. Use an air gauge to ensure the
- tire pressure is at proper PSI (found on sidewall of tire)





Rims

PMS, NCBB, NMH, no illegal holes or welds.





Lug Nuts

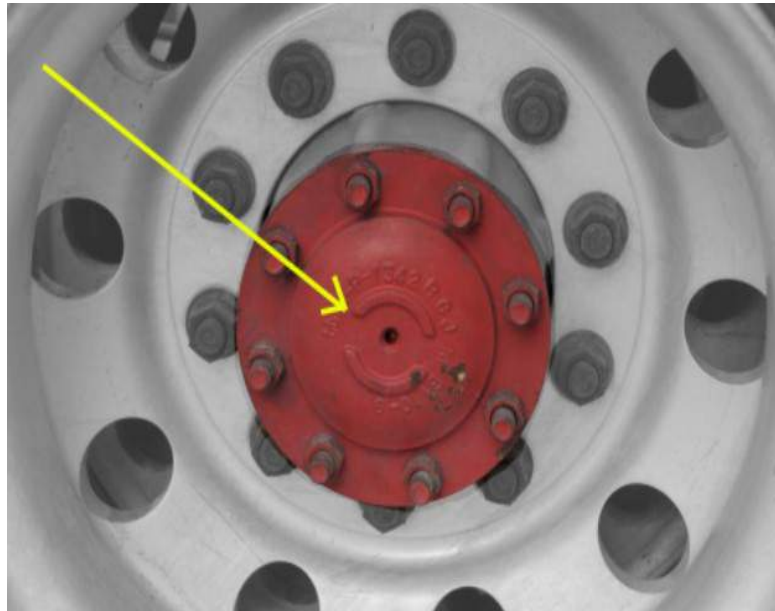
PMS, NCBB, NMH. No rust trails or shiny threads which indicate loose, or cross threaded nuts.





Axle Oil Seal

Check that axle oil seal is PMS, NCBB, NMH, not leaking.





Spacers or Budd Spacing

- Make sure spacing is PMS, NCBB, NMH, with tires
- spaced evenly and no debris between wheels.





Rear of Tractor

- Move to the rear of the tractor.



Mud Flaps

- PMS, NCBB, NMH, covers width of tire and not dragging on the ground.





Lights & Reflective Tape & Reflectors

- Reflective Tape PMS, NCBB, NMH red & white in color, clean and
- not ripped or torn. Reflectors PMS, NCBB, NMH red in color and
- clean. Lights (tail lights, brake lights, signal lights and flashers)
- PMS, NCBB, NMH red in color and clean.





Coupling System

- Move to check coupling system.



Air & Electrical Connectors on Tractor Air & Electrical Lines

- Air Connectors PMS, NCBB, NMH not leaking. Electrical Connectors PMS, NCBB, NMH, 7 holes and 7 pins not missing, no debris.
- Air Lines PMS, NCBB, NMH, freely hanging above catwalk.
- Electric Lines PMS, NCBB, NMH, freely hanging above catwalk.





Glad hands & Electrical Connectors

- Glad Hands PMS, NCBB, NMH, not leaking, rubber
- grommets ABCDF and no debris. Electric connectors PMS, NCBB
- NMH, 7 holes and 7 pins not missing, no debris.





5th Wheel Skid Plate

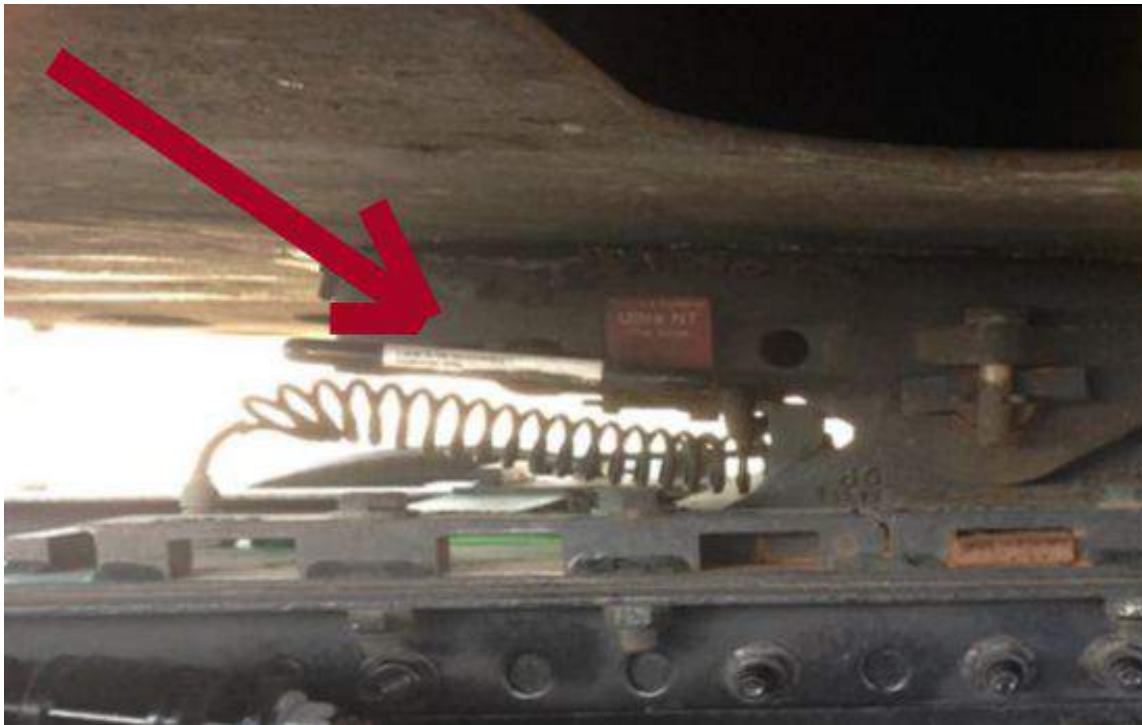
- 5th Wheel Skid Plate PMS, NCBB, NMH
- Properly greased, no gap with apron.





Release Arm & Safety Latch

- PMS, NCBB, NMH in the locked position.





Air Line and Cylinder

- PMS, NCBB, NMH, ABCDF, not leaking.





Platform

- PMS, NCBB, NMH





Mounting Bolts

- PMS, NCBB, NMH





Slide Rail, Apron & Gap

- Slide Rail PMS, NCBB, NMH, Apron PMS, NCBB
- NMH, no illegal holes or welds no gap with 5th wheel
- skid plate.





King Pin

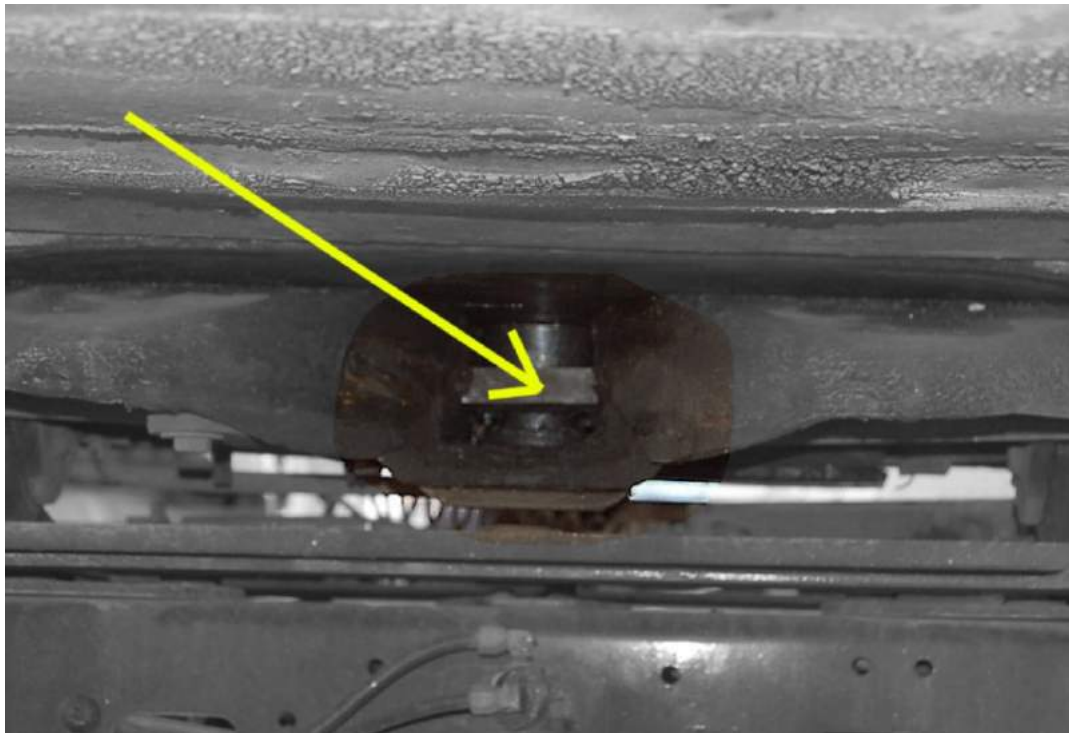
- PMS, NCBB, NMH





Locking Jaws

- PMS, NCBB, NMH securely locked around the shank of the
- king pin.





Front of Trailer

- Move to the front of the trailer



Clearance Lights

- PMS, NCBB, NMH Amber in color and clean.





Header Board or Bulkhead

- PMS, NCBB, NMH, no missing rivets and cargo worthy.





Side of Trailer

- Move to the driver's side of the trailer.



Cross Members and Trailer Floor

- PMS, NCBB, NMH, no illegal holes or welds, cargo worthy
- and no holes in the floor.





Landing Gear Frame, Cross Members, Legs Feet and Crank Handle

- PMS, NCBB, NMH, feet fully raised with no debris and handle
- properly stored.





Side of Trailer

- PMS, NCBB, NMH no missing rivets, no holes, cargo ready.





Reflective Tape

- Red and white in color, clean, not ripped or torn.
- Covers 50% of trailer down the sides.





Side Lights

- Marker, Signal, Flasher lights PMS, NCBB, NMH
- amber in color and clean.





Air & Electrical Lines

- PMS, NCBB, NMH, ABCDF and not leaking.



Sliding Tandem Frame, Release Arm, Sliding Rail Sliding Pins

- PMS, NCBB, NMH, no illegal holes or welds, release arm and pins
- in locked position





Trailer Tandem Axles

- Move to the trailer tandem axles.



Tandem Suspension Springs & Torque Arm

Torque Arms PMS, NCBB, NMH, Springs PMS, NCBB,
NMH or shifted out of alignment.





U-bolts

- PMS, NCBB, NMH no rub marks or shiny threads indicating
- looseness.





Spring Mounts

- Check that Spring Mounts are PMS, NCBB, NMH





Brake Lines

- PMS, NCBB, NMH, ABCDF and not leaking..





Brake Chamber

- Brake Chambers are PMS, NCBB, NMH and not leaking.





Slack Adjuster & Push Rod

Slack adjusters and push rods are PMS, NCBB, NMH and no more than 1 inch free play at push rod with brakes released.





Drums & Linings

Drums and linings are PMS, NCBB, NMH, no oil, grease or debris.





Tandem Tires

PMS, NCBB, NMH, ABCDF, Not leaking. Properly seated to the rim with no rust to indicate leaks. Tread is evenly worn and has at least 2/32 inch tread depth.





Valve Stem with Metal Cap

- PMS, NCBB, NMH, Not leaking. Use an air gauge to ensure the
- tire pressure is at proper PSI (found on sidewall of tire).





Rims

- PMS, NCBB, NMH, no illegal holes or welds.





Lug Nuts

PMS, NCBB, NMH. No rust trails or shiny threads which indicate loose, or cross threaded nuts.





Hub Oil Seal

Check that the Hub Oil Seal is PMS, NCBB, NMH, not leaking. Check oil level at sight glass and check outer rubber seal for ABCDF and leaks





Spacers or Bud Spacing

Make sure spacing is PMS, NCBB, NMH, with tires spaced evenly and no debris between wheels.





Mud Flaps

PMS, NCBB, NMH, covers width of tire and not dragging on the ground.





Trailer Chain and Rear Marker Light

- Trailer chain PMS, NCBB, NMH. Rear Marker Light PMS, NCBB
- NMH, red in color and clean.



Rear of Trailer

- Move to the rear of the Trailer



Doors, Hinges, Locks and Latches

- Doors PMS, NCBB, NMH no holes and cargo worthy
- Hinges PMS, NCBB, NMH. Locks and Latches PMS
- NCBB, NMH in the locked position and cargo ready.





Lights, Reflectors & Reflective Tape

- Lights (outside lights are tail, signal and flasher...inside lights are tail and brake) PMS, NCBB, NMH red in color and clean.
- Reflectors on door (if present) are PMS, NCBB, NMH, clean, not ripped or torn. Reflective Tape is PMS, NCBB, NMH, red and white in color, clean, not ripped or torn and cover 100% of the rear of the trailer.





External Light Check

- When you have completed the outside portion of the vehicle
- the examiner will ask you to perform an external light operations
- check. At this time you will ask them to help you check the lights.
- You will need to take the examiner around the vehicle and ask
- them to ensure all lights are properly working...remember to point
- out all lights on both tractor and trailer and name all the functions
- of each different light.
- Then you will get in the truck, turn on the lights and perform all light
- functions for the examiner who is still outside of the vehicle.



In Cab & Air Brakes

- Move to the inside of the tractor cab.



Climbing Into Cab

- Climb in with three points of contact, facing the tractor.
- When you sit down, put on your seat belt and check it
- for cuts, abrasions, or dry rot and that it latches and
- unlatches properly.



Emergency Equipment

- Check that you have three reflective triangles that are
- not damaged and stored properly. Check that you have a
- minimum 10BC fire extinguisher, fully charged with an up
- to date inspection sticker and safety pin in place.
- check that you have 6 spare fuses, properly stored.





Safe Start

- Make sure the transmission is in neutral, the parking brakes
- are set and the clutch is pressed all the way down.
- Turn the key to the on position and let the instruments
- stop cycling. Start the engine.



Gauges

- All gauges PMS, NCBB, NMH.





Oil Pressure Gauge

- Oil pressure gauge should read between 20-45 psi of pressure.





Temperature Gauge

- Temperature gauge should be at, or rising to its
- normal range of 180-210 degrees.





Temperature Gauge

- Temperature gauge should be at, or rising to its
- normal range of 180-210 degrees.





Voltmeter

- Voltmeter should read between 12 and 14 volts.





Air Gauge(s)

- Air gauge(s) should be at or rising to their normal
- range of 100 to 140 psi.





Lighting Indicators

- Check the indicators for left and right turn signals
- and four way flashers. Turn on the head lights and
- check the indicator for high/low beam head lights.



Heater and Defroster

- Turn on the heater and defroster and check that air flows
- to the foot well and onto the windshield.





Horns

- Sound the city and highway horns, at least
- one of them must function properly.



Windshield and Mirrors

- Windshield mounted securely, not cracked, not dirty and no illegal stickers.
- Rubber seal should not be cut, dry rotted or frayed and not leaking.
- Mirrors should be mounted securely, not cracked or dirty, no illegal stickers and adjusted properly for you to use.





Windshield Wipers and Washer

- Windshield Wipers PMS, NCBB, NMH, no dry rot or frays and
- making full contact with the windshield when running. Washer
- sprays fluid onto the windshield.





Begin Air Brake Test

- Air pressure should be at governor cut out between 120 and 140 psi
- Turn the engine off and put the key in the on position without restarting the engine. Push in both the yellow and red brake valves.





Leak Rate Test

- With the brake pedal firmly applied the air
- system should not loose more than 4 psi in
- one minute (be sure to count the full minute while
- checking, unless told to stop by the examiner)





Low Pressure Warning Check

- Fan air from the system with the brake pedal until the
- Low Pressure Warning light and or buzzer activate at or
- before the system drops below 60 psi.
- Point this out to the examiner.





Emergency Brake Valve Check

- Continue to fan air out of the system until both the
- red and yellow valves close (pop out) at between 20-45 psi
- DO NOT TOUCH THEM.
- Inform the examiner that they have popped out.





Parking Brake Check

- Restart the engine and build air pressure to governor
- cut out between 120 and 140 psi. Release (push in) the
- yellow valve (tractor parking brake), place the transmission
- in a low gear and tug against the trailer parking brake to assure
- that it holds. Apply (pull out) the yellow tractor parking brake
- valve and release (push in) the red trailer parking valve, place
- the transmission in a low gear and tug against the tractor
- parking brake to assure that it holds.



Service Brake Check

- Set the parking brakes, place the transmission in neutral.
- Exit the cab and remove the wheel chock(s).
- Enter the cab, put on your seat belt, release (push in) both red and yellow valves, place the transmission in a low gear and move forward
- at about 5 mph. Firmly apply the brake pedal and clutch pedal.
- The vehicle should stop without noise or pulling to either side.



Trailer Service Brake Check

- With the vehicle still in a low gear move forward at about 5 mph.
- Press the clutch and pull the trailer hand valve (if vehicle so equipped, if not skip this check). The vehicle should stop with no noise or
- pulling to either side.